

DAILY RESEARCH, 9 SEPTEMBER 2020

PT PROFINDO SEKURITAS INDONESIA

**GD PERMATA KUNINGAN LT 19
JL KUNINGAN MULIA KAV 9C GUNTUR SETIABUDI JAKARTA SELATAN 12980**

TELP +62 21 8378 0888

EMAIL : CUSTOMERSERVICE@PROFINDO.COM

WWW.PROFINDO.COM | PROCLICK.PROFINDO.COM

MARKET MOVERS



Bursa saham AS ditutup melemah seiring aksi profit taking saham sector teknologi pasca libur. **DOW -2.25%, S&P -2.78%, NASDAQ -4.11%**

Bursa saham Eropa ditutup melemah ditekan oleh kejatuhan saham teknologi AS dan ketegangan negosiasi Brexit menjadi katalis utama. Selain itu investor menanti pertemuan ECB terkait rencana Stimulus Ekonomi Zona Eropa. **Indeks DAX -1.01%, FTSE -0.12%, CAC -1.59%**

Bursa Saham Asia dibuka mayoritas melemah seiring kejatuhan saham2 sector Teknologi di Wallstreet. Selain itu Investor menanti rilis data Inflasi China dan Indeks Harga Konsumen yang akan rilis hari ini. **Hang Seng -0.43%, KOSPI +0.78%, Nikkei+0.42%**

Harga minyak mentah dunia turun dibawah \$40 per barel setelah Arab Saudi memotong pasokan Minyak ditengah masih rendahnya permintaan Minyak Mentah dunia ditengah Pandemi Corvid 19. Harga emas dunia menguat setelah kejatuhan pasar Ekuitas di AS menyebabkan para Investor memilih logam mulia ini sebagai lindung nilai. Selain itu Investor juga masih akan menanti pertemuan ECB terkait stimulus ekonomi Zona Eropa untuk mengatasi Pandemic Corvid 19. **WTI -0.71%, Brent Oil -0.73%, Gold -0.62%.**

IHSG pada perdagangan hari ini diperkirakan akan **BULLISH** dengan Range pergerakan **5200-5280** dengan saham-saham yang dapat diperhatikan : **BBTN LPPF TKIM ASII CPIN SSIA menjadi kalais**

MARET DATA

AMERIKA

DOW 30	27,500.89	-632.42	-2.25%
S&P 500	3,331.84	-95.12	-2.78%
NASDAQ	10,847.69	-465.44	-4.11%

EUROPE

DAX	12,968.33	-131.95	-1.01%
FTSE 100	5,930.30	-7.10	-0.12%
CAC 40	4,973.52	-80.20	-1.59%

ASIA

SHANGHAI	3,316.42	0.00	0.00%
HANGSENG	24,624.34	+34.69	+0.14%
SET	1,293.80	-18.15	-1.38%
KOSPI	2,377.45	-24.46	-1.02%
JCI	5,244.07	+13.88	+0.27%
NIKKEI	22,917.00	-357.13	-1.53%
ASX	5,868.50	-139.30	-2.32%

COMMODITIES

GOLD	1,931.20	-12.00	-0.62%
WTI OIL	36.50	-0.26	-0.71%
BRENT OIL	39.58	-0.29	-0.73%
COAL	50.58	+0.90	+1.80%
PALM OIL	2940	+40	+1.38%
TINS	17,985.00	-65.00	-0.36%
NICKEL	14,862.50	-77.50	-0.52%

EVENT & ECONOMIC CALENDER



ECONOMIC CALENDER :

INDONESIA

GLOBAL

070920	GERMAN INDUSTRIAL PRODUCTION (MoM) (JUL) BRC RETAIL SALES MONITOR (YoY) (AGUSTUS) JAPAN HOUSEHOLD SPENDING (MoM) (JUL) JAPAN CURRENT ACCOUNT (JUL) JAPAN GDP (Q2)
080920	FRANCE NON FARM PAYROLS (QoQ) (Q2) GERMAN TRADE BALANCE (JUL) EURO GDP (QoQ) (Q2) CHINA CPI (MoM) (AGUSTUS)
090920	US JOB OPENING (JUL) US API WEEKLY CRUDE OIL STOCK
100920	ECB MONETARY STATEMENT ECB INTESEST RATE DECISION US INITIAL JOBSLESS CLAIMS US PPI (MoM) (AGUSTUS) US CRUDE OIL INVENTORIES
110920	GBP GDP (MoM) (AGUSTUS) GBP INDUSTRIAL PRODUCTION (MoM) (JUL) GBP TRADE BALANCE (JUL) GERMAN CPI (MoM) (AGUSTUS) SPAIN CPI (YoY) (AGUSTUS) US CORE CPI (MoM) (AGUSTUS)

CORPORATE ACTION :

DEVIDEN

070920	XISC RP 11.5 (CUM 0709, PAYMENT 1609) XIIT RP 9.2 (CUM 0709, PAYMENT 1609) TEBE RP 4 (CUM 0709, PAYMENT 3009) R-LQ45X RP 16.6 (CUM 0709, PAYMENT 1609) GEMA RP 5 (CUM 0709, PAYMENT 0110) DPNS RP 3 (CUM 0709, PAYMENT 3009)
--------	---

RUPS

070920	INCO
090920	POLY
100920	LMAS JAYA

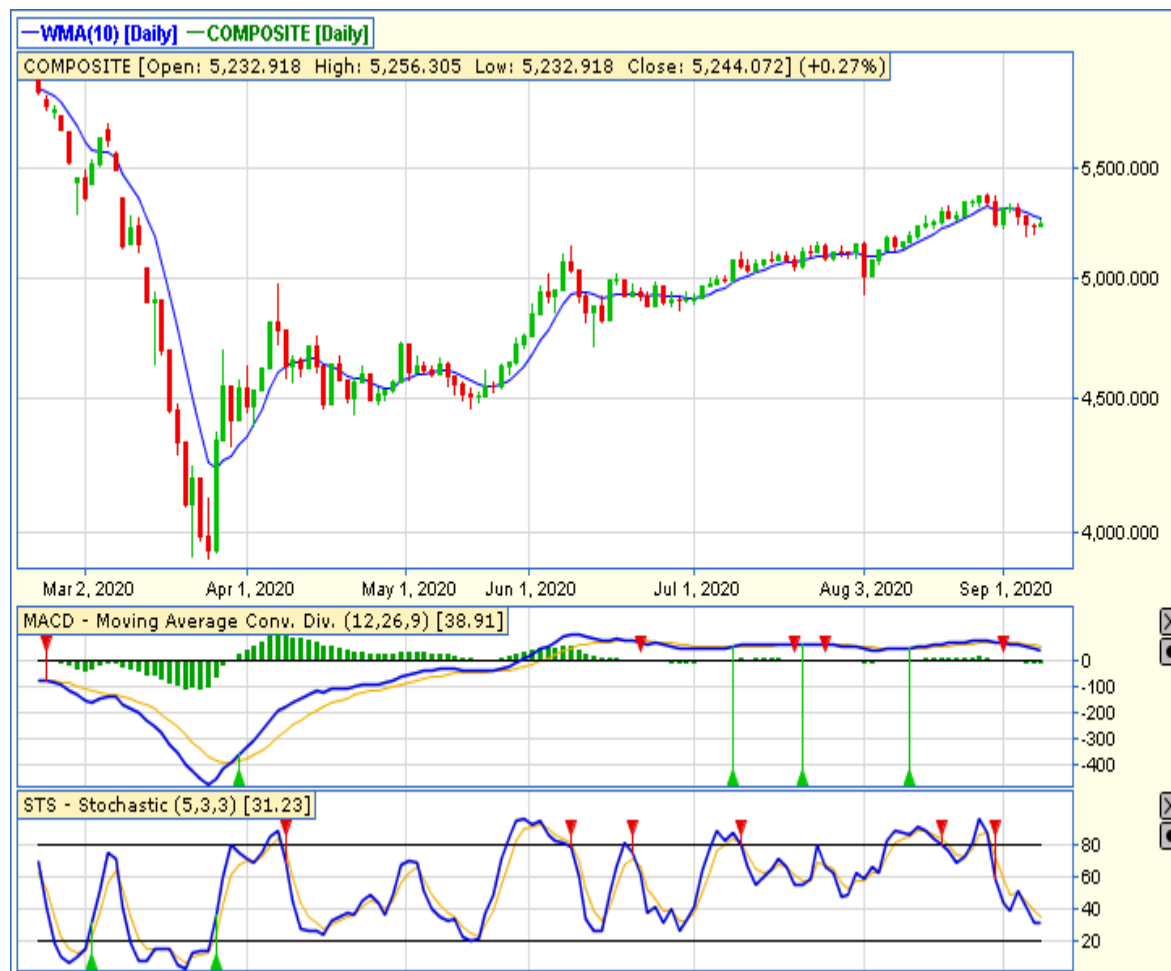
IPO

070920	PT Selaras Citra Nusantara Perkasa Tbk (SCNP) RP 110 PT Kurniamitra Duta Sentosa Tbk (KMDS) RP 300 PT Bank Bisnis Internasional Tbk (BBSI) RP 480
080920	PT Soho Global Health Tbk (SOHO) RP 1820 PT Puri Global Sukses Tbk (PURI) RP 170
100920	PT Rockfields Properti Indonesia Tbk (ROCK) RP 1340 PT Grand House Mulia Tbk (HOMI) RP 380

RIGH ISSUE

080920	MEDC RATIO 2:5 (NEW:OLD) CUM 0809 TRADING PERIOD 14-18 SEPT
--------	---

JAKARTA COMPOSITE INDEX



PREVIOUS 8 SEPTEMBER 2020

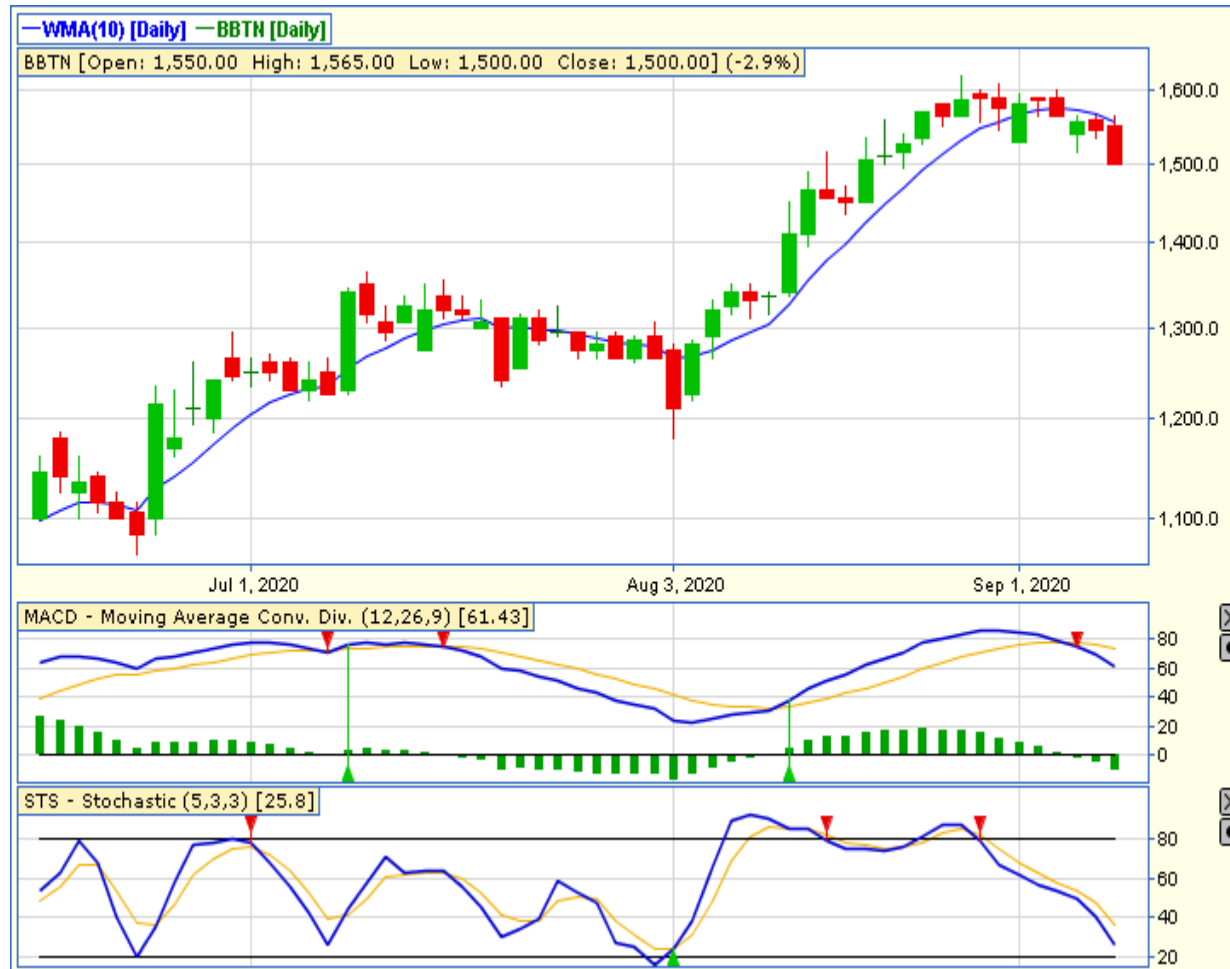
CLOSING	5244.072 +0.265%
TRANSACTION	IDR 6.3 TRILLION
FOREIGN NETT	IDR 290 BIO (SELL)

PREDICTION 9 SEPTEMBER 2020

BULLISH
RANGE 5200-5280

MORNING STAR
STOCHASTIC : OVERSOLD
MACD : HISTOGRAM NEGATIF DAN DOWNTREND

TECHNICAL RECOMENDATION



BBTN – PT BANK TABUNGAN NEGARA (PERSERO) TBK

CLOSING 8/9/2020 RP 1500 (-2.9%)

BUY

TARGET PRICE 1580

STOPLOSS < 1495

BOTTOM FISHING AREA

STOCHASTIC : OVERSOLD

MACD : HISTOGRAM NEGATIF DAN DOWNTREND

TECHNICAL RECOMENDATION



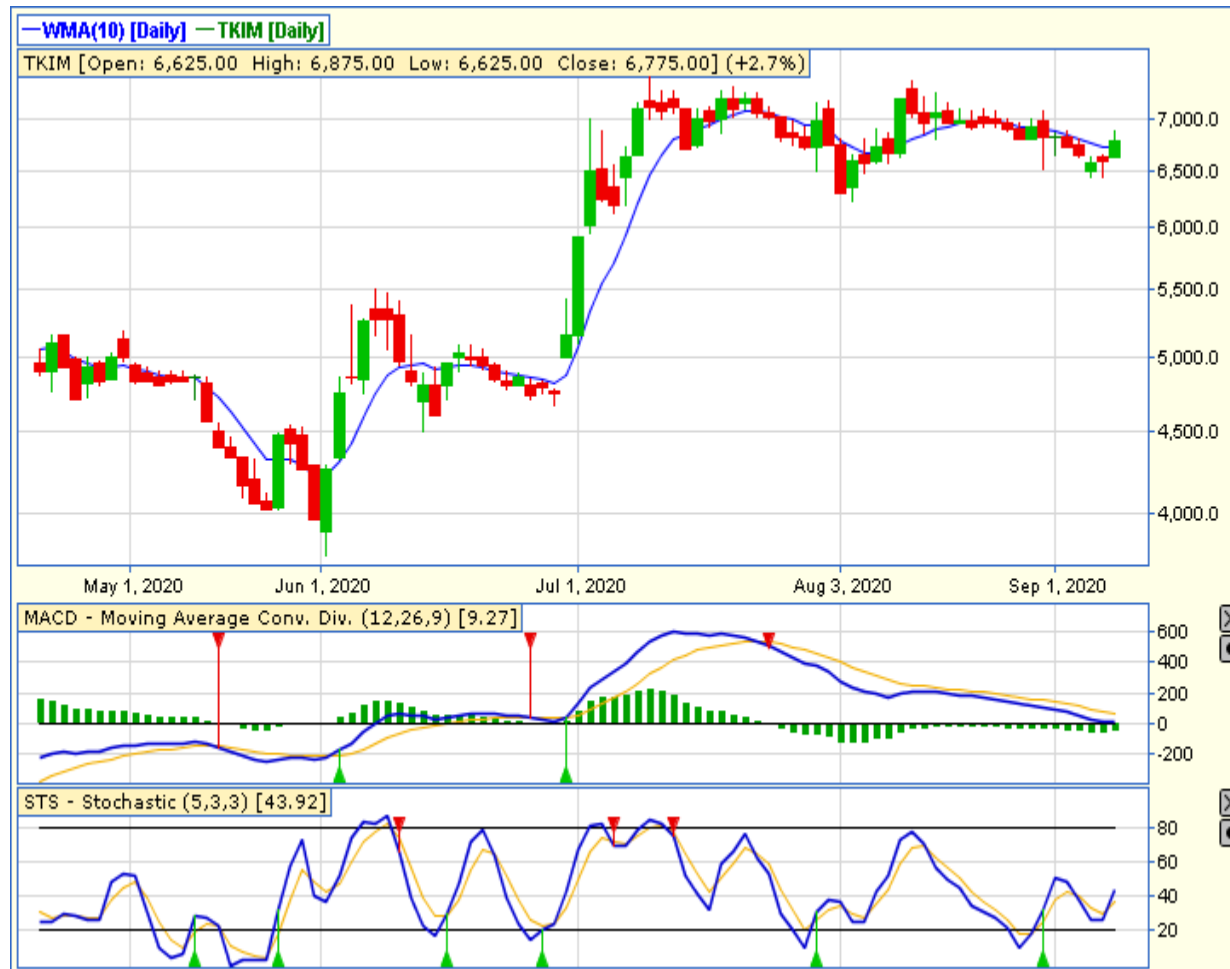
LPPF – PT MATAHARI DEPARTEMENT STORE TBK

CLOSING 8/9/2020 RP 1290 (+2%)

**SELL ON STRENGTH
TAKE PROFIT 1330**

**WHITE CANDLE
STOCHASTIC : UPTREND
MACD : HISTOGRAM POSITIF DAN UPTREND**

TECHNICAL RECOMENDATION



TKIM – PT PABRIK KERTAS TJIWI KIMIA TBK

CLOSING 8/9/2020 RP 6775 (+2.7%)

**SELL ON STRENGTH
TAKE PROFIT 7075**

**BREAK OUT TRIANGLE
STOCHASTIC : UPTREND
MACD : HISTOGRAM POSITIF DAN UPTREND**

TECHNICAL RECOMENDATION

ASII – PT ASTRA INTERNATIONAL TBK

CLOSING 8/9/2020 Rp 5125 (+2%)

**SELL ON STRENGTH
TAKE PROFIT 5250**

MORNING STAR
STOCHASTIC : GOLDEN CROSS
MACD : HISTOGRAM NEGATIF MENGECIL DAN
LOWER AREA



TECHNICAL RECOMENDATION



**CPIN – PT CHAROEN POKPHAND INDONESIA
TBK**

CLOSING 8/9/2020 RP 6200 (+2.1%)

**SELL ON STRENGTH
TAKE PROFIT 6425**

**BREAK OUT FALLING WEDGE
STOCHASTIC : UPTREND
MACD : HISTOGRAM NEGATIF MENGECIL DAN
BERSIAP GOLDEN CROSS**

TECHNICAL RECOMENDATION



SSIA – PT SURYA SEMESTA INTERNUSA TBK

CLOSING 8/9/2020 RP 416 (+2.4%)

BUY

TARGET PRICE 458

STOPLOSS < 410

BREAK OUT TRIANGLE

STOCHASTIC : UPTREND

MACD : HISTOGRAM POSITIF DAN UPTREND

RESEARCH TEAM



YULIANA

**RESEARCH ANALYST &
CORPORATE FINANCE**



DIMAS WP PRATAMA, CSA

TECHNICAL ANALYST

EQUITY CAPITAL MARKET TEAM



JESSIE JAMES

HEAD OF EQUITY SALES



PRASETYO NUGROHO

HEAD OF DEALING ROOM



GABRIELLA PRATIWY

HEAD OF ONLINE TRADING